

ALSO MFG'S OF:

SNAKE GUARD GLUE TRAP

BAT-A-WAY

MOLE/VOLE CONTROL

COBWEB ELIMINATOR

RID-A-CRITTER

RAT-A-WAY

DOG & CAT REPELLENT

DEER, RABBIT & SQUIRREL

MOSQUITO & GNAT

VARPEL RODENT ROPE

FLEA & TICK REPELLENT

RX INSECT REPELLENT

GUARANTEED PERFORMANCE

DR. T'S NATURE PRODUCTS, INC.

P.O. Box 682

PELHAM, GA 31779

WWW.REPELL.COM



EFFECTIVE ON POISONOUS & NON POISONOUS SNAKES



UNIVERSITY TESTED CUSTOMER PROVEN



SNAKE-A-WAY

SNAKE REPELLENT

Net Weight ...4lb(1.814kg)

CAUTION: Keep away from children. (See back panel for details.)

PRECAUTIONARY STATEMENTS HAZARDS TO HUMANS AND DOMESTIC ANIMALS CAUTION

Harmful if swallowed, avoid breathing vapors. Avoid contamination of food and feed. Avoid prolonged skin contact.

ENVIRONMENTAL HAZARDS

This pesticide is toxic to fish. Do not apply directly to water, or to areas where surface water is present or to inter-tidal areas below the mean watermark.

DIRECTIONS FOR USE

It is a violation of federal law to use this product in a manner inconsistent with its labeling.

USE RESTRICTIONS: FOR OUTDOOR USE ONLY. APPLY ONLY AS DIRECTED ON LABEL. To repel rattlesnakes (Genus *Crotalus*) and checkered garter (*Thamnophis Marcianus*) from areas around houses, cabins, trailers, garages, utility houses, barns, woodpiles, sand piles, trash cans, and flower beds. May also be used around the periphery of gardens. Do not use this product at sites where snakes are believed to be already present, as the deterrent effects of the product might tend to confine snakes to the treated areas.

Do not apply this product in gardens or in fields of crops grown for food or feed. Do not use this product near streams, ponds, pools, or water supplies.

Tests of this product have suggested that it can be effective deterrent for the types of snakes listed above. While the product might deter other types of snakes as well, it is not expected to consistently repel snakes of the following types: corn snakes and other rat snakes (Genus *Elaphe*); and "moccasin" snakes such as cottonmouths and copperheads (Genus *Agkistrodon*).

APPLICATION DIRECTIONS: Using gloves, apply SNAKE-A-WAY IN BANDS SURROUNDING THE AREA TO BE PROTECTED.

Use bands 4 to 5 inches wide to repel checkered garter snakes. For rattlesnakes, use bands 8 to 12 inches wide. In yards, lightly sprinkle SNAKE-A-WAY over the area within the treatment band.

When the odor of SNAKE-A-WAY becomes faint, its effectiveness may be diminished. If this occurs during a season when snakes are active, retreat with enough of the product to restore the original odor intensity. Retreatment may also be necessary after heavy rains.

Notice: Buyer assumes all risk of use, storage, and handling of this material not in strict accordance with label directions.

STORAGE AND DISPOSAL.

Do not contaminate water, food, or feed by storage or disposal.

Storage: Store in a cool, dry, well-ventilated place inaccessible to children and pets.

Disposal: Do not reuse empty container. Rinse thoroughly. Securely wrap in newspaper and discard in trash.

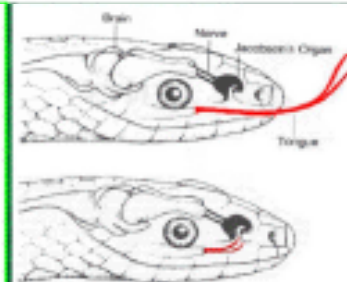
Active Ingredients:
Naphthalene..... 7.0%
Sulfur: 28.9%
Inert Ingredients..... 65.0%
Total.....100.0%
Net Weight ...4 lbs. (1.814 kg)

PACKAGE MAY NOT APPEAR FULL, MAY SETTLE DURING SHIPPING PRODUCT SOLD BY WEIGHT NOT VOLUME



Patented
EPA Reg. No 58630-1
EPA Est. No. 58630-GA-1

HOW SNAKE-A-WAY WORKS



WHEN SNAKE-A-WAY IS DETECTED BY A SNAKE'S SENSORY ORGAN (JACOBSON'S ORGAN), IT TEMPORARILY SHUTS DOWN THE SNAKE'S SENSORY RECEPTION CAUSING THE SNAKE TO VACATE THE PREMISES.

APPLY SNAKE-A-WAY:

AROUND HOUSES, CABINS, TRAILERS, GARAGES, CAMPSITES, WOODPILES, TRASH CANS, OR ANYWHERE SNAKES ARE UNDESIRED

WHEN TO APPLY SNAKE-A-WAY:

SPRING: WHEN SNAKES ARE MOST ACTIVE

SUMMER: WHEN FAMILIES ARE MOST

EXPOSED TO THE OUTDOORS

FALL: APPLICATION CRITICAL FOR PREVENTING

SPRING INFESTATIONS/FOR HIBERNATION AND DENNING

• **University Tested**

• **Lasts up to 3 months**

• **Effective against non-poisonous and poisonous snakes**

• **Not destroyed by rain**

• **Safe to pets when applied as directed \ Guaranteed**

